

An Introduction to  
**Model Organisms**



written and illustrated by  
Emily Coren



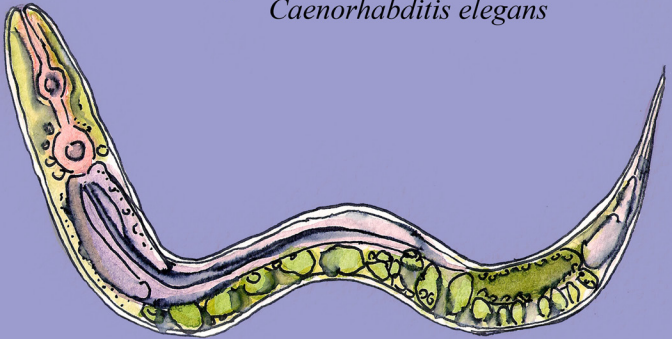


I am a geneticist, and I study...

a plant called Arabidopsis,  
*Arabidopsis thaliana*



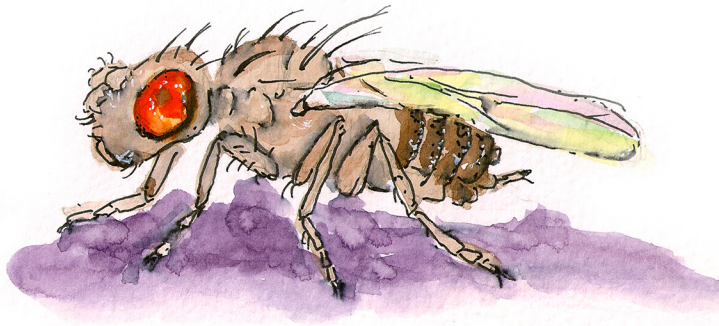
C.elegans a nematode worm,  
*Caenorhabditis elegans*

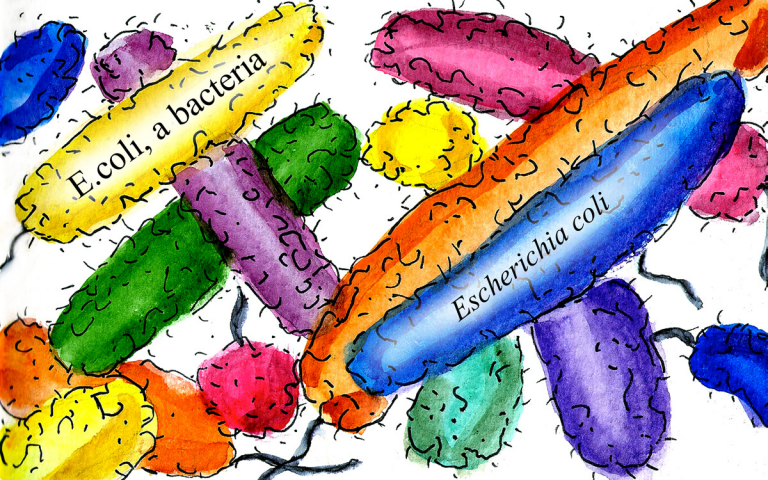




a zebra danio fish,  
*Danio rerio*

Drosophila, a fruit fly  
*Drosophila melanogaster*





E. coli, a bacteria

Escherichia coli

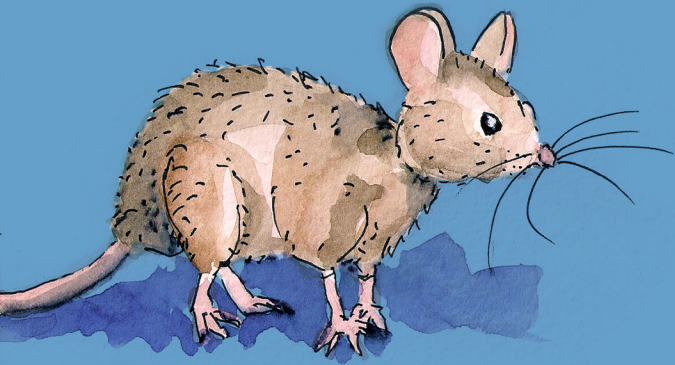




a frog named *Xenopus*,  
*Xenopus laevis*

and a mouse.  
*Mus musculus*

*Squeak Squeak*



I am a curious geneticist.



## **Introducing a few of the most widely studied creatures in genetics.**

Model organisms are used to help scientists understand biological processes. They are species that are studied in a laboratory, usually because they are easy to maintain and breed and have experimental advantages.

**WalkaboutEm.com**