

## Introducing a few of the most widely studied creatures in genetics.

Model organisms are used to help scientists understand biological processes. They are species that are studied in a laboratory, usually because they are easy to maintain, breed and have experimental advantages.

**WalkaboutEm.com**

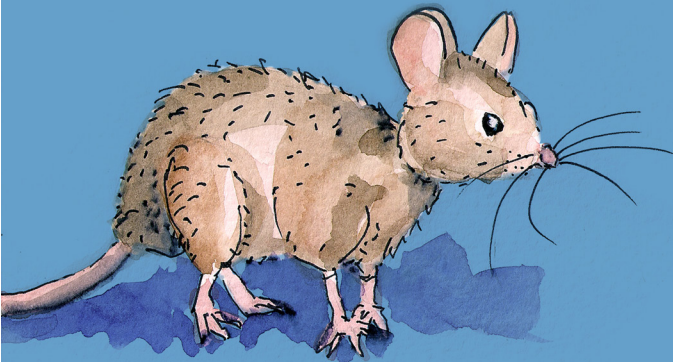
## An Introduction to **Model Organisms**



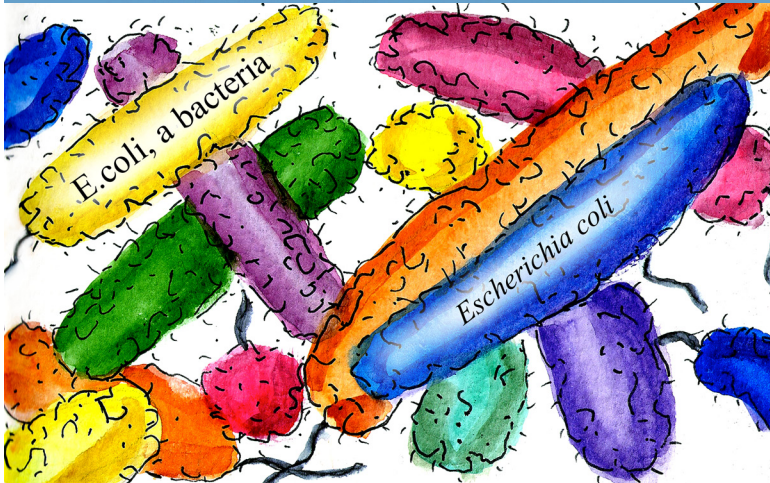
written and illustrated by  
Emily Coren

and a mouse.  
*Mus musculus*

*Squeak Squeak*



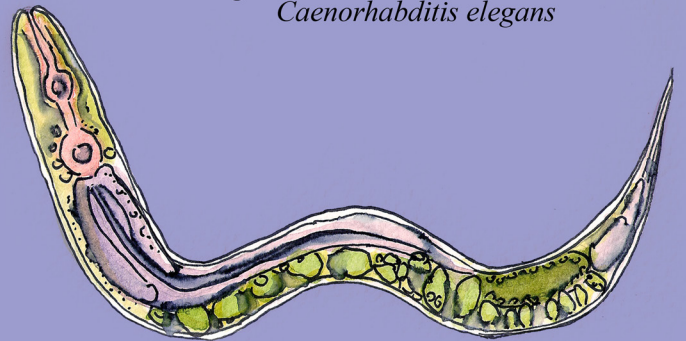
I am a geneticist, and I study...



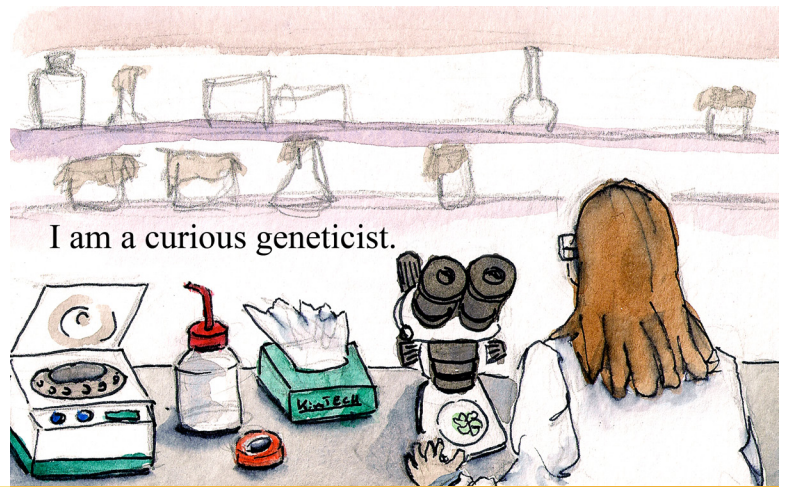
*E. coli*, a bacteria

*Escherichia coli*

*C. elegans* a nematode worm,  
*Caenorhabditis elegans*







a plant called Arabidopsis,  
*Arabidopsis thaliana*



a frog named Xenopus,  
*Xenopus laevis*



a zebra danio fish,  
*Danio rerio*

Drosophila, a fruit fly  
*Drosophila melanogaster*

